

Sirius Academy West CIEAG Programme

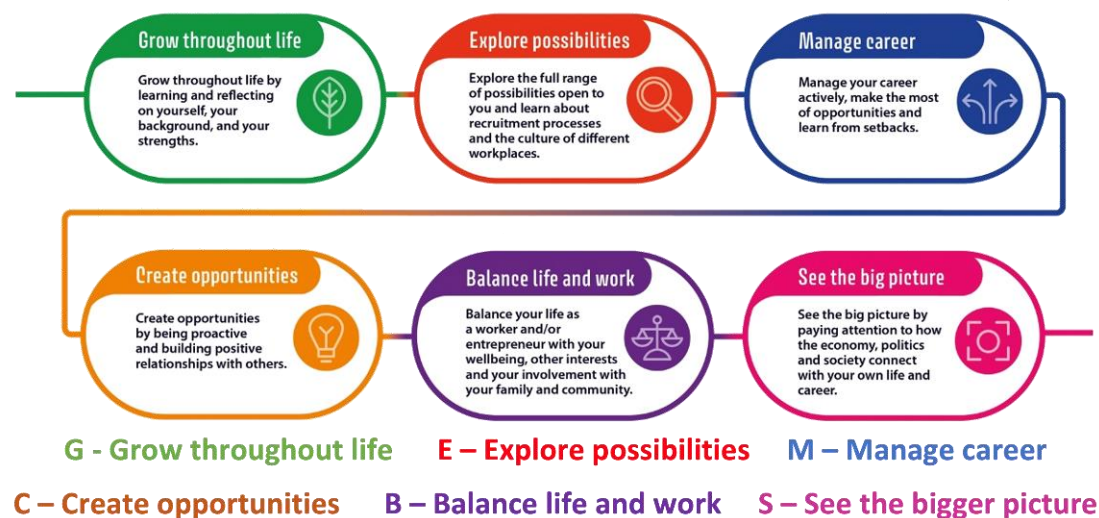
Sirius Academy West offers all students a programme of quality careers information, education, advice and guidance, to ensure they are aware of the world of work, the routes available to careers, whilst helping them to develop career management skills to improve their life opportunities. To assist with this process, we welcome the involvement of the full range of apprenticeship providers, employers, and Further & Higher Education establishments both locally, regionally and nationally. In addition to the scheduled activities that are detailed below in our careers programme, the Academy also has weekly careers showcase event that is available across lunch that all students are able to access- employers and providers are encouraged and welcomed.

The CIEAG programme, our students follow, is delivered in a variety of ways. It complements Character Education, PSHE and Personal Development Pathway with the Gatsby Benchmarks at the centre of the programme, mapped alongside the CDI Framework learning aims. The programme is constantly evaluated, to ensure the students are receiving good quality knowledge regarding their career related learning regarding options, LMI and their future pathways, whilst striving to meet the Gatsby Benchmarks. Reaching the Benchmarks is tracked by the Compass Assessment Benchmark Tool in conjunction with the Careers and Enterprise Company and also the reports generated by Xello; this and destination data evidence the impact of the CIEAG programme, securing successful destinations for our students who progress and sustain positive destinations such as traineeships, apprenticeships, sixth form colleges and employment or voluntary work with training. The impact of our careers programme and the CEIAG we deliver mainly through feedback from students and staff. All activities and policies will be reviewed annually

Below is the outline of the CIEAG programme:

The eight Gatsby benchmarks of Good Career Guidance are:

1. A stable careers programme
2. Learning from career and labour market information
3. Addressing the needs of each pupil
4. Linking curriculum learning to careers
5. Encounters with employers and employees
6. Experiences of workplaces
7. Encounters with further and higher education
8. Personal guidance



Year 7				
Title/ Theme	Outline/ Description	Term	Gatsby Benchmark	CDI Framework Learning Area
Action Planning	All students complete an action plan, detailing their future education and career ideas- parent/ carers are encouraged to explore careers on website including LMI related materials – this is promoted via MyEd. Action plan informs future careers events/ visitors	Autumn term	1.A stable careers programme 2. Learning from career and labour market information 3. Addressing the needs of each pupil	Grow throughout life
Employer/ Provider Encounters	Provider/ Employer linked assemblies Showcase shed events where students can talk to external providers regarding subjects at school and future options	Throughout the year	5. Encounters with employers and employees 6. Experiences of workplaces 7. Encounters with further and higher education	Grow throughout life Explore possibilities
Careers week and curriculum Activities	Business, enterprise & STEM activities & visits including NHS day. Annual Careers fair and linked activities	Throughout the year Spring term	4. Linking curriculum learning to careers 3. Addressing the needs of each pupil 6. Experiences of workplaces 7. Encounters with further and higher education	Explore possibilities See the bigger picture
PSHE Lessons	Becoming self-aware, my interests, celebrating difference, linking to the future. Assertiveness, resilience and discernment	Autumn Term	4. Linking curriculum learning to careers	Grow throughout life See the bigger picture
Specific Careers Lessons	Target setting Teamworking Matching school subjects to careers Matching hobbies and skills to careers How to use Xello and completing my Xello profile	Spring Term	2. Learning from career and labour market information 3. Addressing the needs of each pupil	Explore possibilities Balance life and work Manage career

Year 8				
Title/ Theme	Outline/ Description	Term	Gatsby Benchmark	CDI Framework Learning Area
Action Planning	All students complete an action plan, detailing their future education and career ideas- parent/ carers are encouraged to explore careers on website including LMI related materials – this is promoted via MyEd. Action plan informs future careers events/ visitors	Autumn term	1.A stable careers programme 2. Learning from career and labour market information 3. Addressing the needs of each pupil	Grow throughout life
Careers and curriculum activities	Business & enterprise & activities. STEM/Sustainability project Employer assemblies and visits	Throughout the year	4. Linking curriculum learning to careers 3. Addressing the needs of each pupil 6. Experiences of workplaces 7. Encounters with further and higher education	Explore possibilities See the bigger picture
National careers week activities	Annual Careers fair and linked activities	Spring term	4. Linking curriculum learning to careers 3. Addressing the needs of each pupil 6. Experiences of workplaces 7. Encounters with further and higher education	Grow throughout life Explore possibilities
PSHE Lessons	Goal Setting	Autumn term	3. Addressing the needs of each pupil 4. Linking curriculum learning to careers	Grow throughout life
Employer and Provider Activities	Provider/ Employer linked assemblies and visits Showcase shed events where students can talk to external providers regarding subjects at school and future options	Throughout the year	5. Encounters with employers and employees 6. Experiences of workplaces 7. Encounters with further and higher education	Grow throughout life Explore possibilities

Specific careers lessons	Bias in careers (stereotyping) Learning styles on Xello Careers research on Xello Careers pathways on Xello Finding out about careers you have never heard of Princes's Trust Programme	Easter term Throughout the year	2. Learning from career and labour market information 3. Addressing the needs of each pupil	Grow throughout life Explore possibilities Manage career See the bigger picture
--------------------------	--	--	--	--

Year 9				
Title/ Theme	Outline/ Description	Term	Gatsby Benchmark	CDI Framework Learning Area
Action Planning	All students complete an action plan, detailing their future education and career ideas- parent/ carers are encouraged to explore careers on website including LMI related materials – this is promoted via MyEd. Action plan informs future careers events/ visitors	Autumn term	1.A stable careers programme 2. Learning from career and labour market information 3. Addressing the needs of each pupil	Grow throughout life
Careers week and curriculum Activities National Apprenticeship week activities	Annual Careers fair and linked activities Assemblies and lessons specific to Careers fair and option choices Competition based on subject links to careers and staff's previous careers and how skills evolve Visits and Working lunches with various employers and providers	Spring term	4. Linking curriculum learning to careers 3. Addressing the needs of each pupil 6. Experiences of workplaces 7. Encounters with further and higher education	Grow throughout life Explore possibilities See the bigger picture
Employer and Provider Activities	Provider/ Employer linked assemblies and visits Showcase shed events where students can talk to external providers regarding subjects at school and future options	Throughout the year	5. Encounters with employers and employees 6. Experiences of workplaces 7. Encounters with further and higher education	Grow throughout life Explore possibilities Balance life and work

PSHE Lessons	Goal setting Assertiveness Resilience	Autumn term Summer term	3. Addressing the needs of each pupil	Grow throughout life
Specific careers lessons	HOP Options lessons/ activities Career research Where can subjects take you Linking subjects to career paths	Throughout the year	2. Learning from career and labour market information 3. Addressing the needs of each pupil	Explore possibilities Manage career See the bigger picture
Careers guidance and advice	One to one guidance available	Throughout the year	8. Personal Guidance	Grow throughout life Explore possibilities Manage career
Options Themed activities	Options evening with curriculum staff, careers leader and adviser available and various stands and personal guidance promoted to students and parents/ carers STEM Club	Throughout the year	7. Encounters with further and higher education 8. Personal guidance	Grow throughout life

Year 10				
Title/ Theme	Outline/ Description	Term	Gatsby Benchmark	CDI Framework Learning Area
Action Planning	All students complete an action plan, detailing their future education and career ideas- parent/ carers are encouraged to explore careers on website including LMI related materials – this is promoted via	Autumn term	1.A stable careers programme 2. Learning from career and labour market information 3. Addressing the needs of each pupil	Grow throughout life

	MyEd. Action plan informs future careers events/ visitors			
Careers week and curriculum Activities National Apprenticeship week activities	Business Enterprise & Travel and Tourism visits to Airports Annual Careers fair and linked activities Assemblies and lessons specific to Careers fair and option choices Competition based on subject links to careers and staff's previous careers and how skills evolve Visits and Working lunches with various employers and providers RateMyApprenticeship -Virtual Careers Event STEM Club	Spring term	4. Linking curriculum learning to careers 3. Addressing the needs of each pupil 6. Experiences of workplaces 7. Encounters with further and higher education	Grow throughout life Explore possibilities
Employer and Provider Activities	Provider/ Employer linked assemblies and visits Showcase shed events where students can talk to external providers regarding subjects at school and future options	Throughout the year	5. Encounters with employers and employees 6. Experiences of workplaces 7. Encounters with further and higher education	Grow throughout life Explore possibilities Balance life and work
Work activities	Virtual work experience opportunities available to all through Springpod and other organisations	Throughout the year	5. Encounters with employers and employees 6. Experiences of workplaces	Grow throughout life Explore possibilities Balance life and work

Careers guidance and advice	One to one guidance interviews	Throughout the year	8. Personal guidance	Grow throughout life Explore possibilities Manage career
Mock interviews	Interview preparation sessions/ lessons Mock interviews with external providers and employers All students receive feedback	Autumn term	5. Encounters with employers and employees 7. Encounters with further and higher education	Grow throughout life
Specific careers lessons	HOP Options lessons/ activities How to use log on move on Use Xello to understand what the levels of courses are. LMI research Identify local college websites to discover courses. Start writing the log on move on personal statements. CV writing Connecting school subjects with real-life tasks Discover how your favourite subject can lead you to a related career All to receive Sirius Careers Booklets	Summer term	2. Learning from career and labour market information 3. Addressing the needs of each pupil	Grow throughout life Explore possibilities Balance life and work Manage career See the bigger picture

Year 11

Title/ Theme	Outline/ Description	Term	Gatsby Benchmark	CDI Framework Learning Area
Action Planning	All students complete an action plan, detailing their future education and career ideas- parent/ carers are encouraged to explore careers on website including LMI related materials – this is promoted via MyEd. Action plan informs future careers events/ visitors	Autumn term	1.A stable careers programme 2. Learning from career and labour market information 3. Addressing the needs of each pupil	Grow throughout life
Careers guidance and advice	One to one guidance interviews	Throughout the year	8. Personal guidance	Grow throughout life Explore possibilities Balance life and work Manage career
Careers week and curriculum Activities National Apprenticeship week activities	Business Enterprise & Travel and Tourism visits to Airports Annual Careers fair and linked activities Assemblies and lessons specific to Careers fair and Post 16/ next steps choices Competition based on subject links to careers and staff's previous careers and how skills evolve Visits and Working lunches with various employers and providers RateMyApprenticeship -Virtual Careers Event Stem Club	Spring term	4. Linking curriculum learning to careers 3. Addressing the needs of each pupil 6. Experiences of workplaces 7. Encounters with further and higher education	Grow throughout life Explore possibilities Balance life and work Create Opportunities

Employer and Provider Activities	<p>Provider/ Employer linked assemblies and visits</p> <p>Showcase shed events where students can talk to external providers regarding subjects at school and future options</p> <p>Specific sessions for students to meet providers</p> <p>Guest speaker sessions</p>	Throughout the year	<p>5. Encounters with employers and employees</p> <p>6. Experiences of workplaces</p> <p>7. Encounters with further and higher education</p>	<p>Grow throughout life</p> <p>Explore possibilities</p> <p>Manage Career</p> <p>Create Opportunities</p>
Specific careers lessons	<p>Completing applications</p> <p>LMI research- shape your future</p> <p>Transition into Post 16 opportunities lessons</p> <p>Building Resilience</p> <p>Confidence Boosters</p> <p>Identify ways further education often differs from secondary school.</p> <p>Looking ahead to FE</p> <p>Confidence Boosters</p> <p>Discover the workplace skills and attitudes that employer's value and work life balance</p> <p>Connecting Soft Skills to Careers</p> <p>All to receive Sirius Careers Booklets</p>	Autumn term	<p>1.A stable careers programme</p> <p>2. Learning from career and labour market information</p> <p>3. Addressing the needs of each pupil</p> <p>4. Linking curriculum learning to careers</p>	<p>Grow throughout life</p> <p>Explore possibilities</p> <p>See the bigger picture</p> <p>Balance life and work</p> <p>Manage career</p> <p>See the bigger picture</p>

Approved by Head of School & Local Advisory Board:

Signed: Mrs G Ransom

G. Ransom

Position: Head of School (Sirius Academy West)

Date: 28 April 2023