

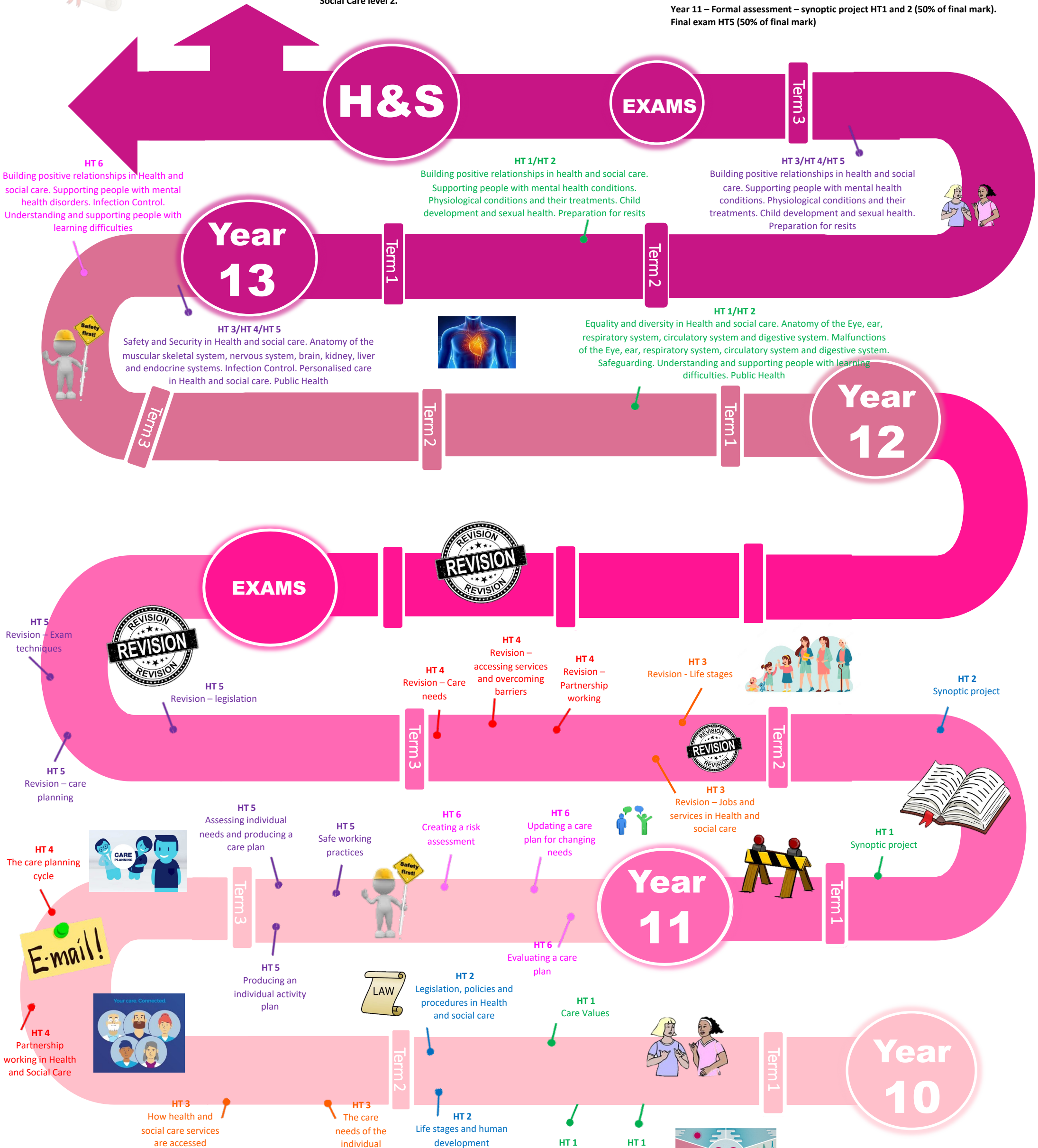
# HEALTH & SOCIAL CARE

**Post 16 specifications:**  
P16 specification – OCR Cambridge Technicals Health and Social Care Level 3

**Specifications:**  
Specifications – Year 10 NCFE VCERT Technical Award in Health and Social Care Level 2  
Social Care Level 2, Year 11 OCR Cambridge Nationals Health and Social Care Level 2.

**Summative assessment in Health & Social Care:**  
Summative assessments in Health and social care – Year 10 – No formal assessments. End of unit mock exams at the end of half term 1-4. Mock project assessment half term 6.

Year 11 – Formal assessment – synoptic project HT1 and 2 (50% of final mark).  
Final exam HT5 (50% of final mark)



**RESPECT**

- RESPECT for yourself
- RESPECT for each other
- RESPECT for the environment
- RESPECT for the community
- RESPECT for education
- RESPECT for the future