

# HEALTH & SOCIAL CARE

**Post 16 specifications:**  
P16 specification = OCR Cambridge Technicals Health and Social Care Level 3

**Specifications:**  
Specifications – year 11 are now doing NCFE (the same as year 10)

**Summative assessment in Health & Social Care:**

Year 9 – No formal assessments. End of unit tests at the end of half term 1-6.

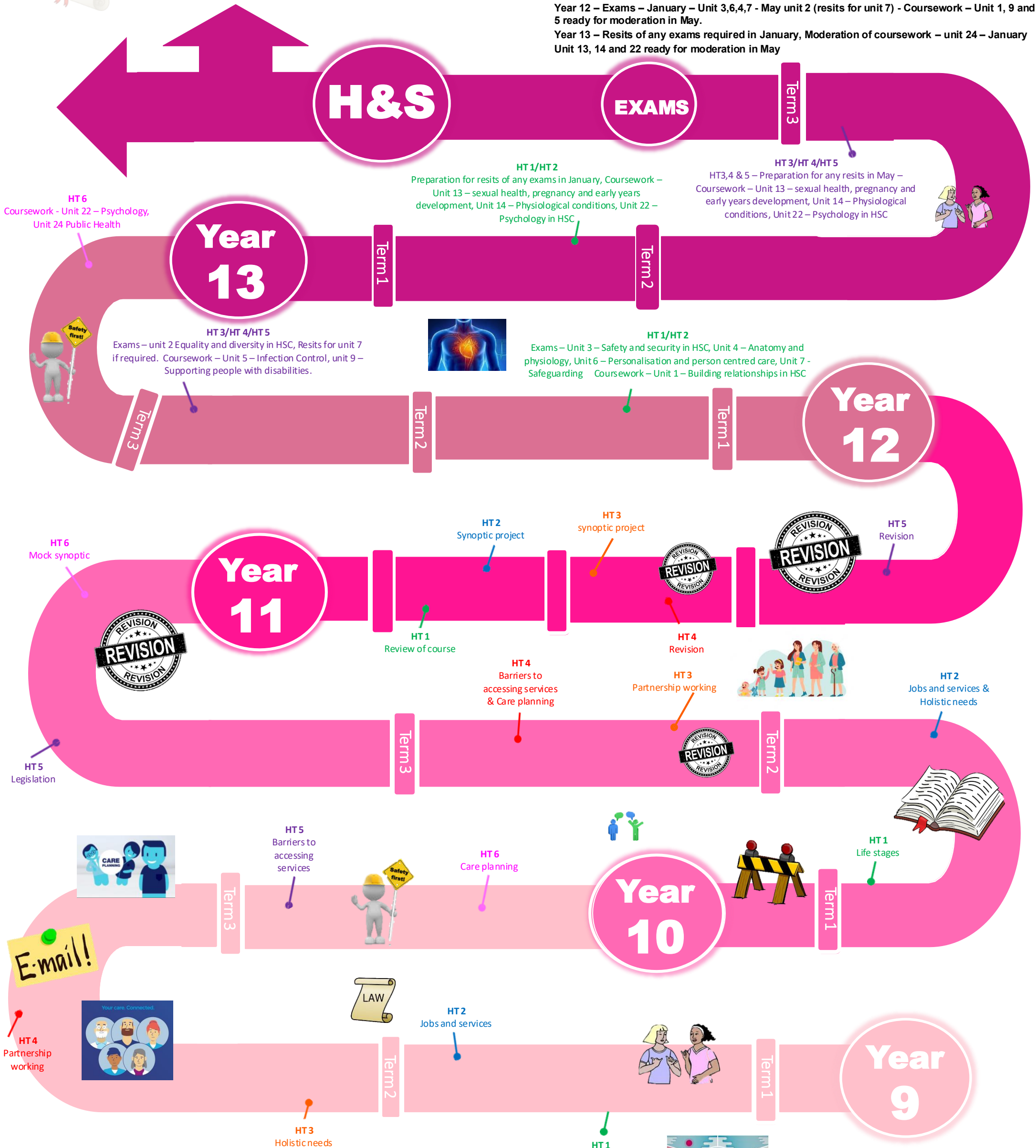
Year 10 – No formal assessments. End of unit mock exams at the end of half term 1-5.

Mock project assessment half term 6.

Year 11 – Formal assessment – Mock exam HT1. synoptic project HT2 and 3 (50% of final mark). Final exam HT5 (50% of final mark)

Year 12 – Exams – January – Unit 3,6,4,7 - May unit 2 (resits for unit 7) - Coursework – Unit 1, 9 and 5 ready for moderation in May.

Year 13 – Resits of any exams required in January, Moderation of coursework – unit 24 – January Unit 13, 14 and 22 ready for moderation in May



**RESPECT**

- RESPECT for yourself
- RESPECT for each other
- RESPECT for the environment
- RESPECT for the community
- RESPECT for education
- RESPECT for the future

**Sirius ACADEMY**  
WHERE STARS ARE BORN!